

Lucy sofa 2-seater

SOUND ABSORPTION AREA ACCORDING TO ISO 354 AND SS 25269

Measurement of sound absorption area in a reverberation room



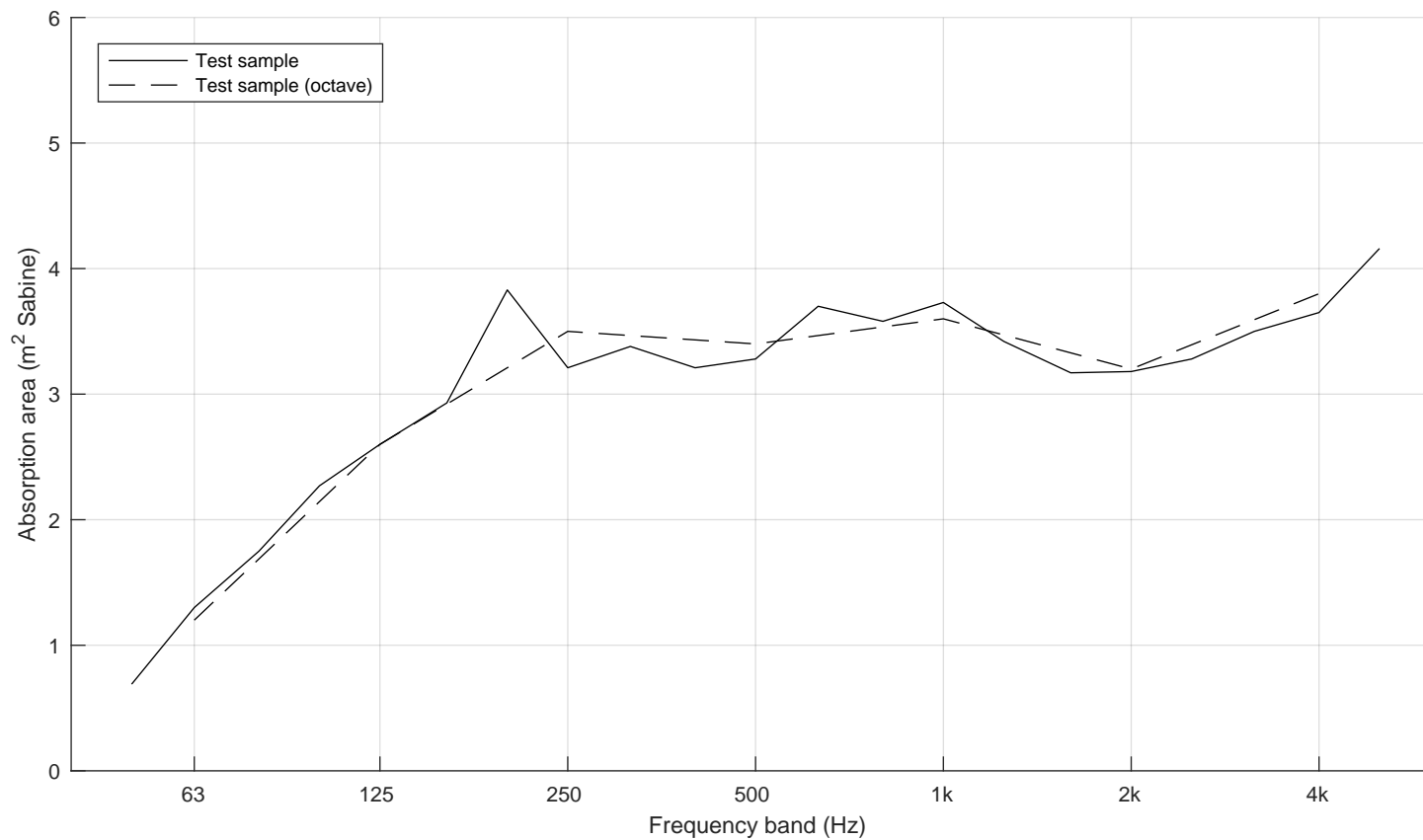
Report number:
18-106-M8
Date
2018-04-12

Frequency f [Hz]	Sound absorption area [m ² Sabine]	
50	0.69	
63	1.30	1.2
80	1.75	
100	2.27	
125	2.60	2.6
160	2.93	
200	3.83	
250	3.21	3.5
315	3.38	
400	3.21	
500	3.28	3.4
630	3.70	
800	3.58	
1000	3.73	3.6
1250	3.42	
1600	3.17	
2000	3.18	3.2
2500	3.28	
3150	3.50	
4000	3.65	3.8
5000	4.16	

Client: Offecct
 Manufacturer: Offecct
 Product identification: Lucy sofa 2-seater
 Description of test specimen: Upholstered modular sofa.
 Measured standing on floor.

Reverberation room volume: 200 m³
 Temperature: 15.7 °C (empty: 16.9 °C)
 Air humidity: 37 % (empty: 35 %)
 Air pressure: 100.3 kPa (empty: 100.3 kPa)
 Number of specimens: 1

Measurement date: 2018-04-11
 Measured by: Carl Nyqvist



$$N_{10} = 3.1$$