



Axia 2.5 Netweave

Axia 2.5 Netweave

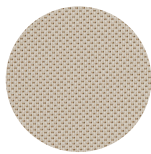
RH Axia 2.5 is equipped with a netweave back with pelvic support.

The netweave fabric is available in six different colours inspired by deep forests, wide fields, flowers, stone, concrete and brick. Using colours that are found in the environment creates a modern and luxurious design expression in combination with upholstery options from our Standard, Extended or Curated selection of fabrics.

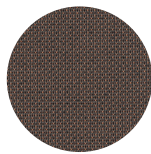


Features & Benefits

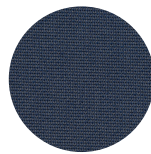
RH Axia 2.5 netweave fabric colors:



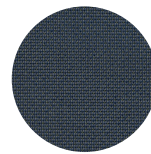
JOIN 32



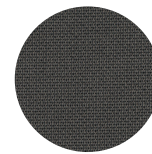
JOIN 14



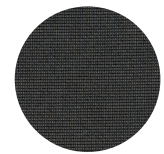
JOIN 70



JOIN 75



JOIN 11



JOIN 10

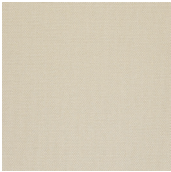




Axia 2.5 Netweave_JOIN 32



Steelcut 3_STT240



E

Focus_FC61039



S

Select_SC61184



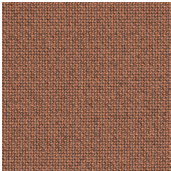
S



Axia 2.5 Netweave_JOIN 14



Cura_CU61257



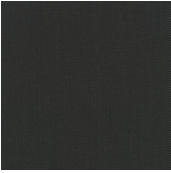
E

Focus_FC61036

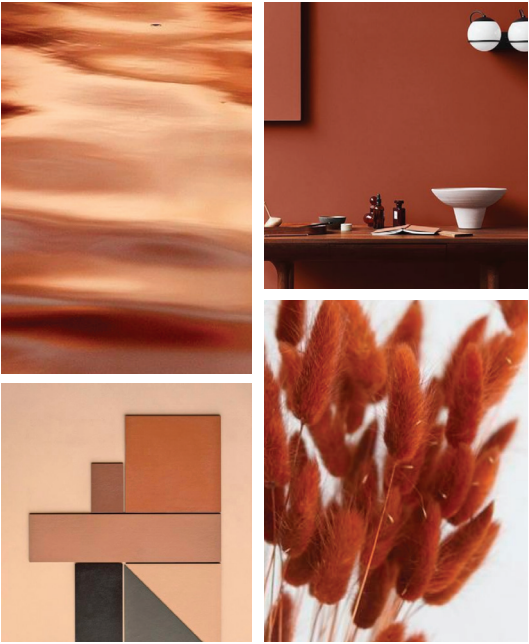


S

Steelcut trio 3_STT383



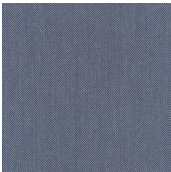
S



Axia 2.5 Netweave_JOIN 70

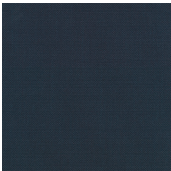


Steelcut trio 3_STT716



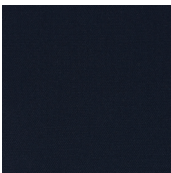
E

Steelcut trio 3_STT796

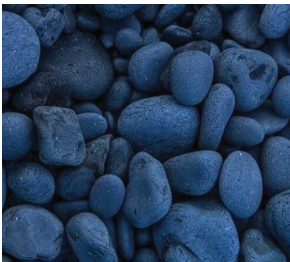
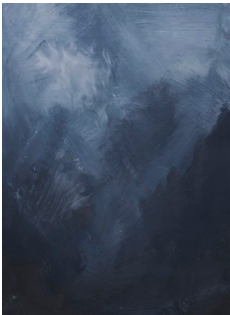
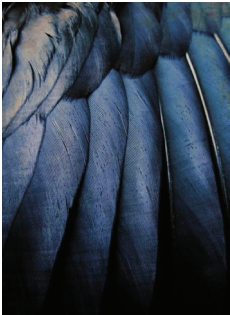


S

Steelcut 3_STT775



E



Axia 2.5 Netweave_JOIN 75

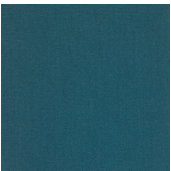


Cura_CU68182



E

Steelcut 3_STT780

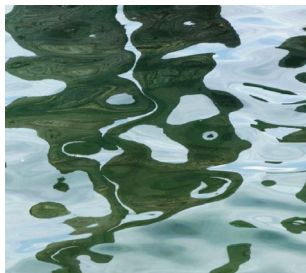
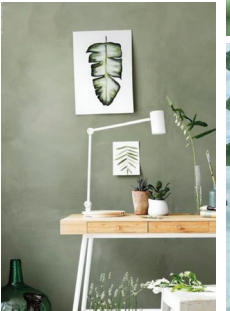
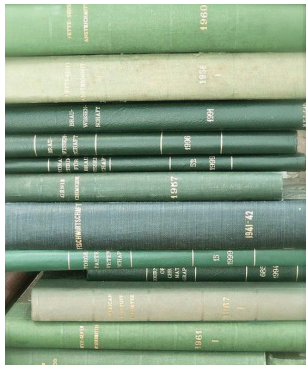
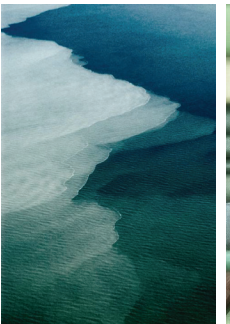


E

Select_SC66194



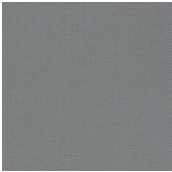
S



Axia 2.5 Netweave_JOIN 11



Steelcut 3_STT155



S

Select_SC60003



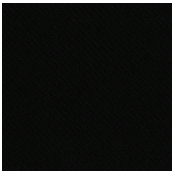
S

Cura_CU60109

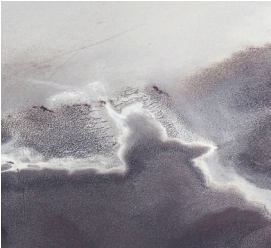


S

Oceanic_OCI001



S



Axia 2.5 Netweave_JOIN 10

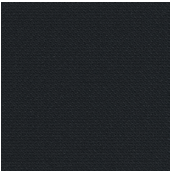


Select_SC60003



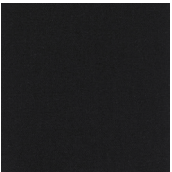
S

Cura_60111



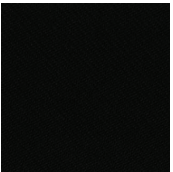
E

Steelcut 3_STT190

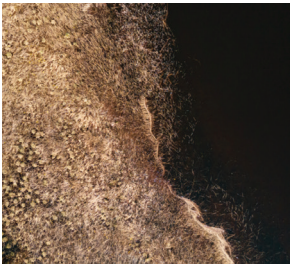


S

Oceanic_OCI001



S





[FLOK.COM/RH](https://flok.com/rh)