

Match yourself

WITH RH MERE0 MESH



Click a colour
to explore

Match yourself

WITH RH MERE0 MESH

Colour reflects who we are and how we work.

Each of the 15 shades in this collection brings a distinct expression. Some calm and neutral, others bold and expressive. Together, they form a mesh palette designed for clarity, contrast, and long-term relevance.

By presenting each mesh colour as a character, we aim to spark interest and reflection in the design process. This moodboard offers a simple way to explore the range, visually and conceptually.

Match yourself. Perform at your best.





Match yourself

WITH SAFFRON YELLOW

Warm and uplifting, Saffron Yellow brings a quiet kind of energy. It brightens the room without being over the top, like a thoughtful optimist who's always sincere and easy to be around.



Saffron Yellow

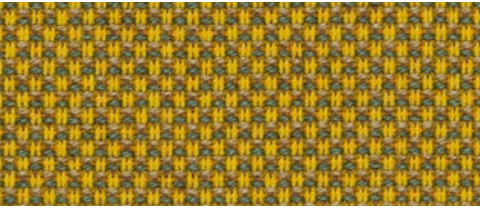
Tale, TAL62057 (Gabriel) Extended



Tonal, TOL62057 (Gabriel)



Capture, CPT6401 (Gabriel)



Breeze Fusion, BZF4830 (Gabriel)





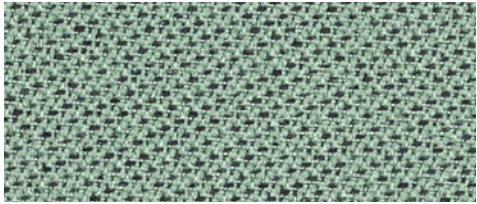
Match yourself

WITH SAGE GREEN

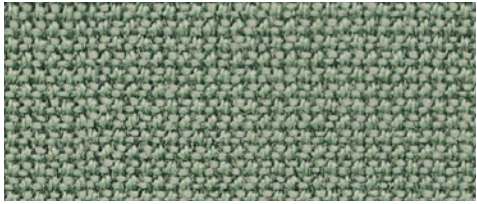
Clear and thoughtful, Sage Green has a calm intelligence. It keeps things simple, balanced, and easy to follow, like a person who makes everything feel less complicated.



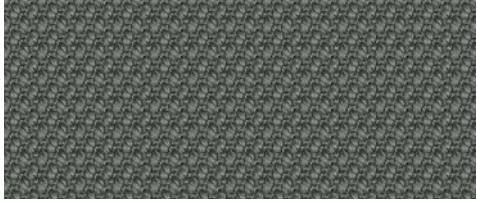
Tale, TAL67098 (Gabriel) Extended



Tonal, TOL67089 (Gabriel)



Cura Loop, CLP68186 (Gabriel)



Steelcut 3, STT922 (Kvadrat)

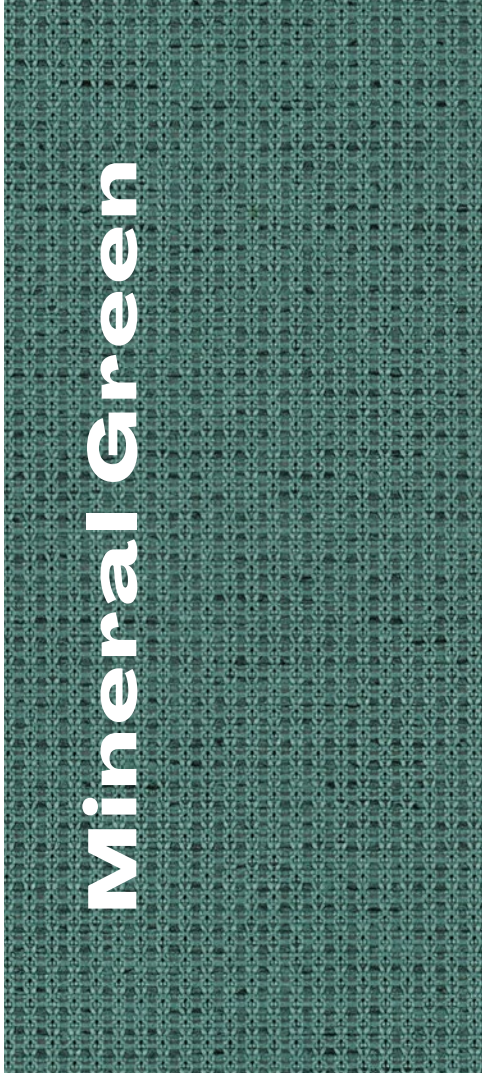




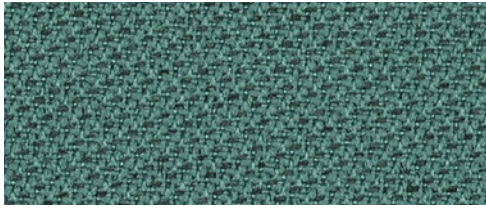
Match yourself

WITH MINERAL GREEN

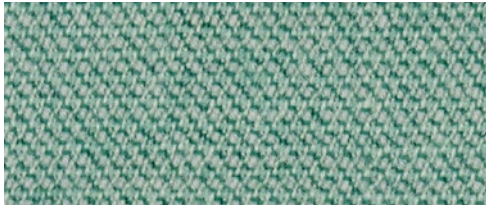
This shade is cool, steady, and grounding.
It doesn't try to grab attention, it just makes the space feel calm and reliable.
Like someone who steadies the ground under your feet.



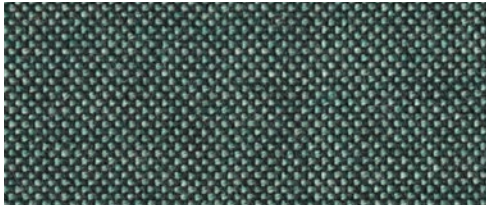
Tale, TAL67090 (Gabriel) Extended



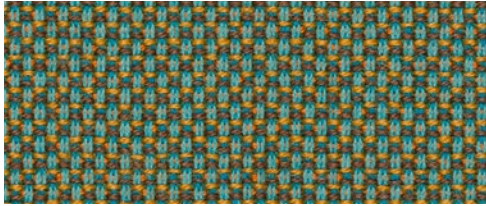
Tonal, TOL67090 (Gabriel)



Capture, CPT3304 (Gabriel)



Technicolour, TEH0940 (Kvadrat)



Breeze Fusion, BZF4870 (Gabriel)

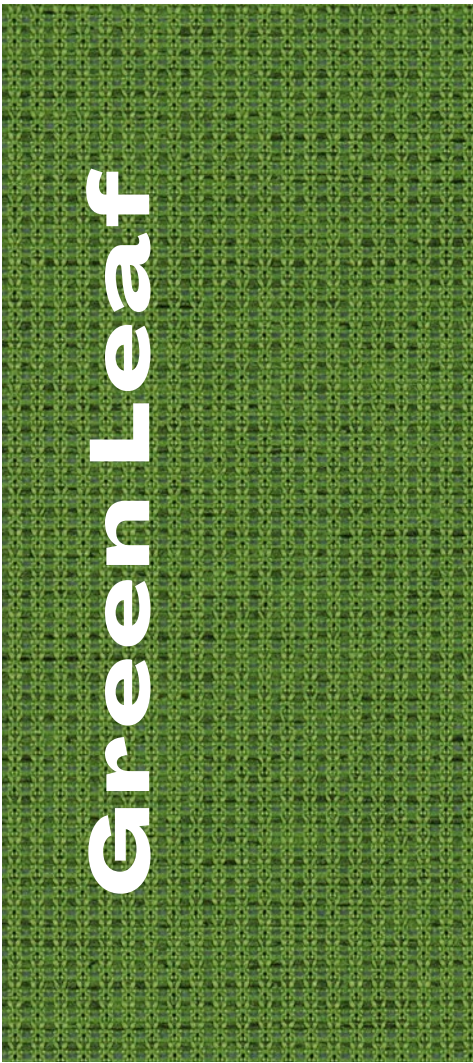




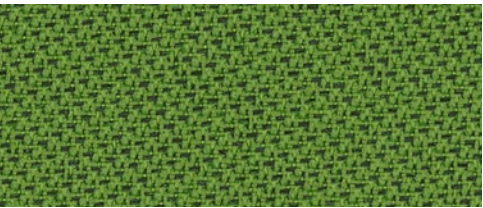
Match yourself

WITH GREEN LEAF

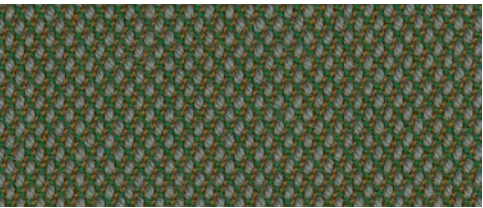
Fresh and lively, Green Leaf feels bright and full of energy. It is the colour of new beginnings, focused, uplifting and ready to move forward, like someone who sees possibilities and takes action with clarity.



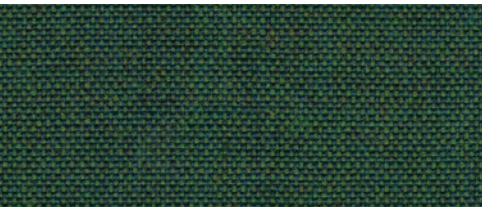
Tale, TAL68207 (Gabriel) Extended



Tonal, TOL68207 (Gabriel)



Steelcut Trio 3, STT946 (Kvadrat)



Remix 3, RMX982 (Kvadrat)

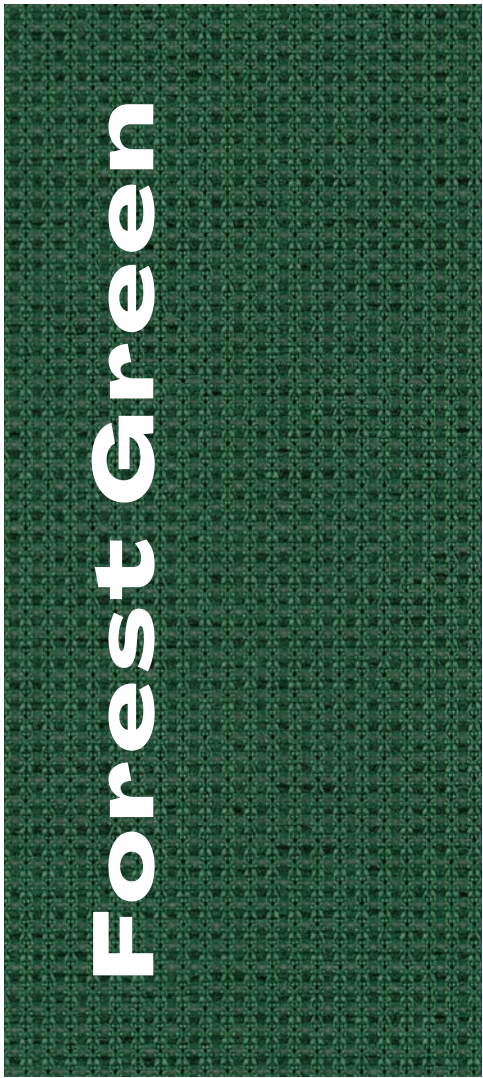




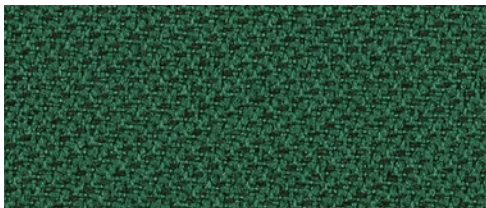
Match yourself

WITH FOREST GREEN

Forest Green is calm, deep, and dependable. It doesn't need to change, it holds steady, like someone who's quietly strong and grounded.



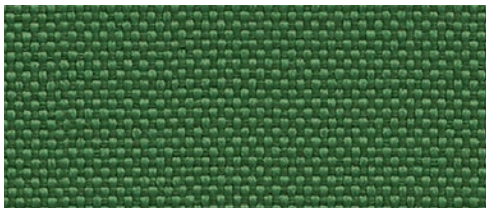
Tale, TAL68206 (Gabriel) ^{Standard}



Tonal, TOL68206 (Gabriel)



Technicolor, TEH0930 (Kvadrat)



Quest, QUE14 (Camira)



Steelcut Quartet, STQ0994 (Kvadrat)

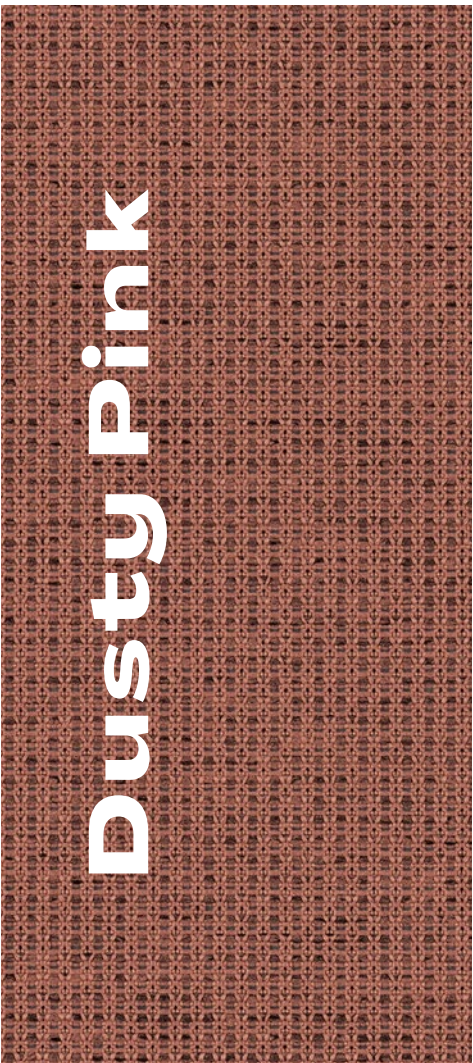




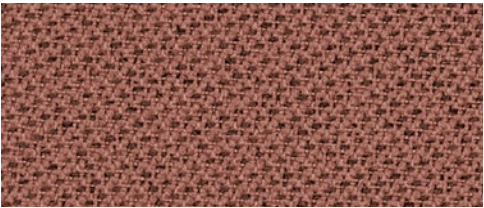
Match yourself

WITH DUSTY PINK

Soft and steady, Dusty Pink has an understated elegance. Gentle, calm and quietly confident, like someone who wins trust through presence and warmth rather than words.



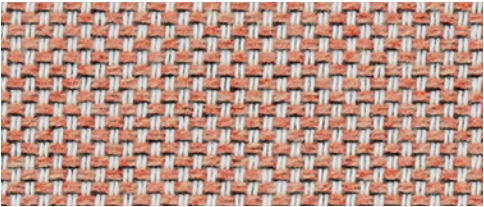
Tale, TAL64210 (Gabriel) Extended



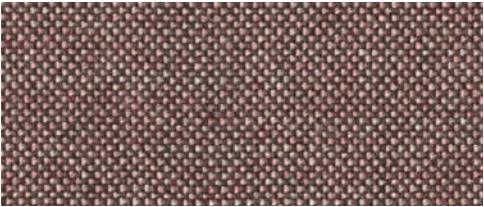
Tonal, TOL64210 (Gabriel)



Capture, CPT7301 (Gabriel)



Parcel Loop, PCL2002 (Gabriel)



Technicolour, TEH0620 (Kvadrat)

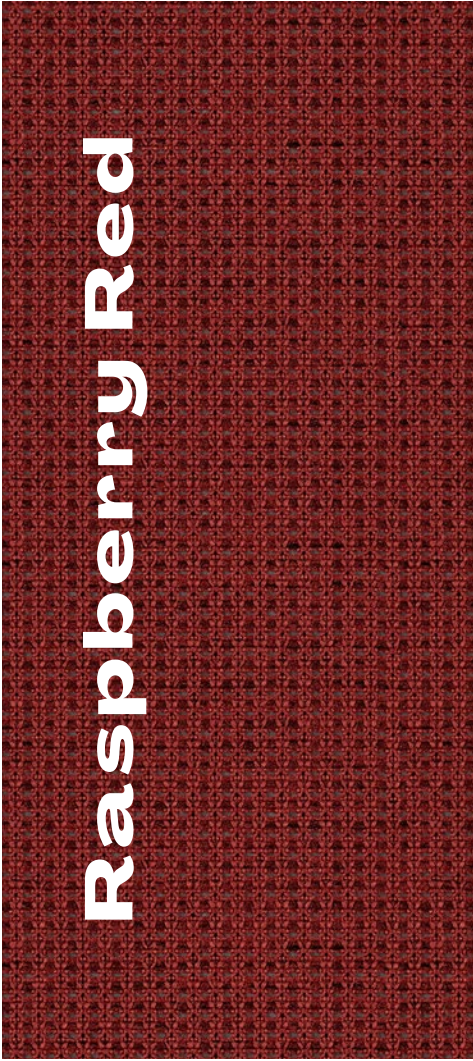




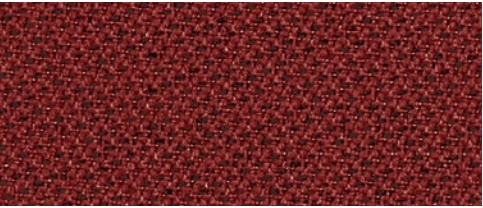
Match yourself

WITH RASPBERRY RED

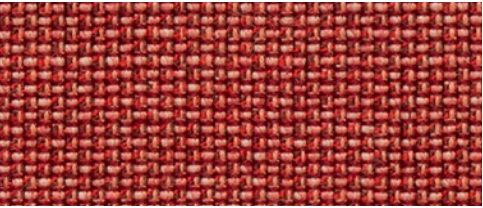
Raspberry Red is bold and confident. It naturally stands out, not because it's loud, but because it feels strong and authentic, like someone who makes an impression just by being themselves.



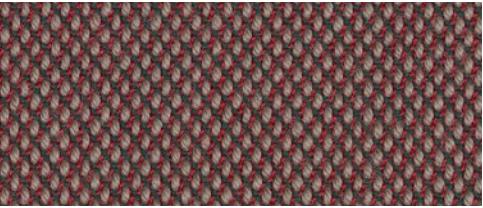
Tale, TAL64209 (Gabriel) ^{Standard}



Tonal, TOL64209 (Gabriel)



Passion, PSN1410 (Gabriel)



Steelcut Trio 3, STT645 (Kvadrat)

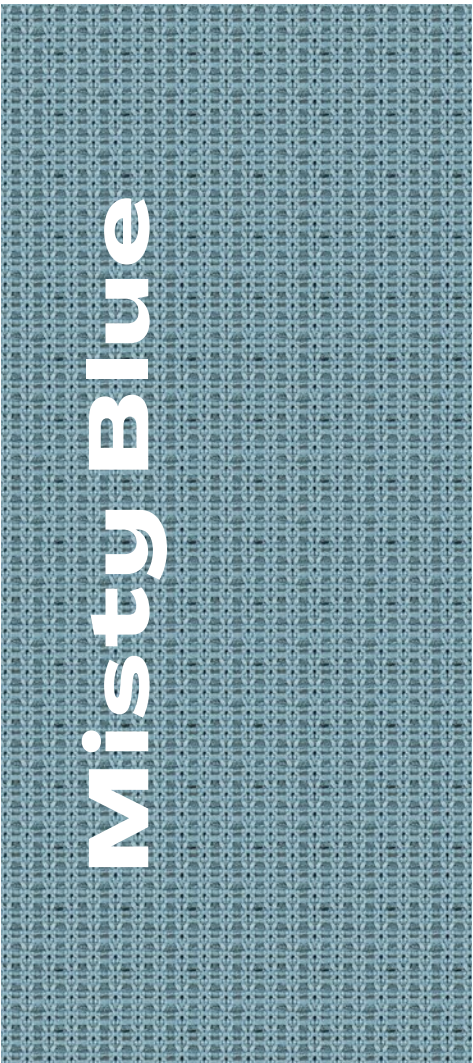




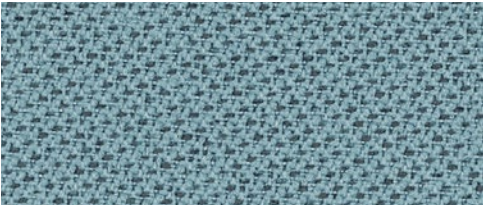
Match yourself

WITH MISTY BLUE

Misty Blue is soft, light, and reflective. It doesn't push to be noticed, it creates space, calm, and ease, like someone who helps the whole room breathe.



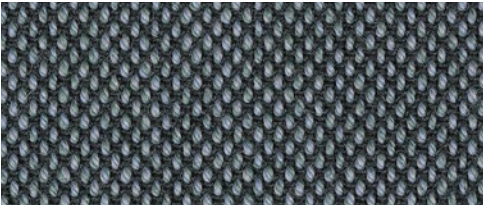
Tale, TAL66185 (Gabriel) Extended



Tonal, TOL66185 (Gabriel)



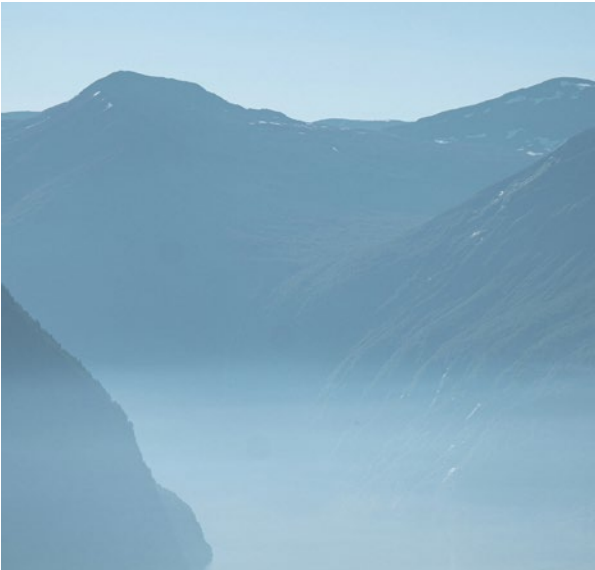
Mandal, MAD760 (GU)



Steelcut Quartet, STQ0154 (Kvadrat)



Steelcut Quartet, STQ0224 (Kvadrat)

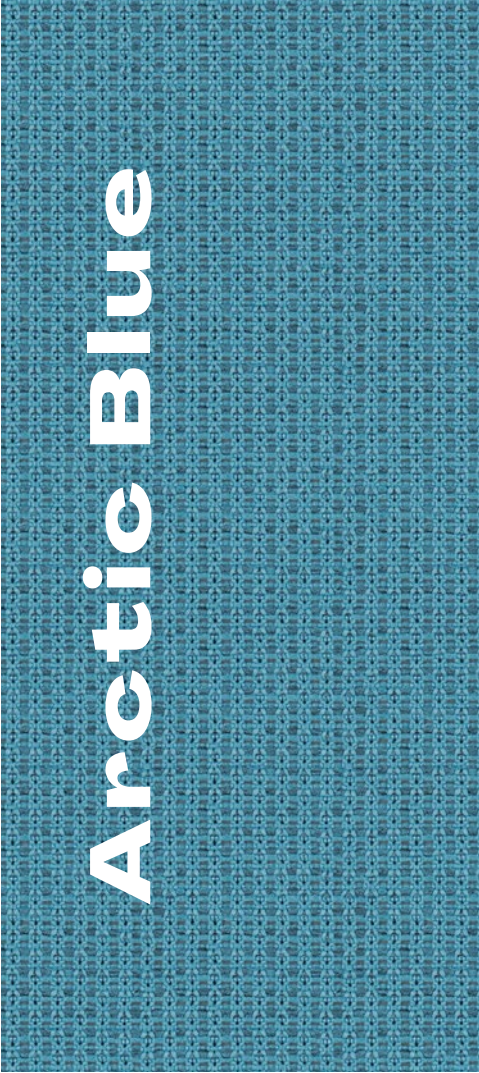




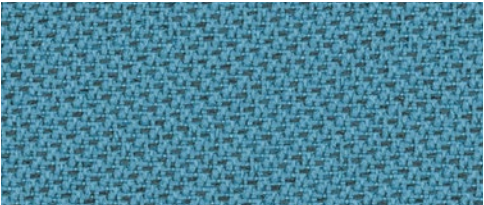
Match yourself

WITH ARCTIC BLUE

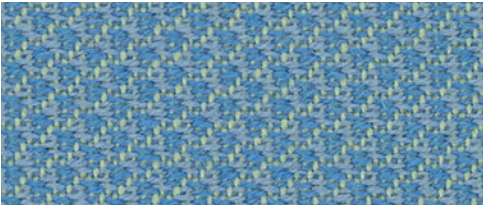
Crisp and clear, Arctic Blue is sharp and purposeful. It's direct and focused, like someone who cuts through the noise and gets straight to the point.



Tale, TAL66183 (Gabriel) Extended



Tonal, TOL66183 (Gabriel)



Node, NOD4633 (Ludvig Svensson)



Quest, QUE11 (Camira)





Match yourself

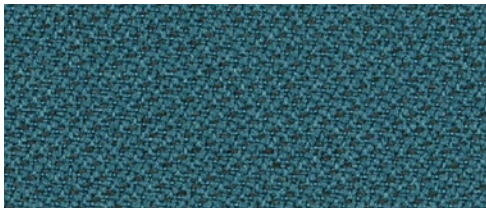
WITH BLUE BERRY

Rich and focused, Blue Berry is all about quiet strength. It's sharp, capable, and magnetic, like someone who gets attention just by being precise and present.



Blue Berry

Tale, TAL66186 (Gabriel) Standard



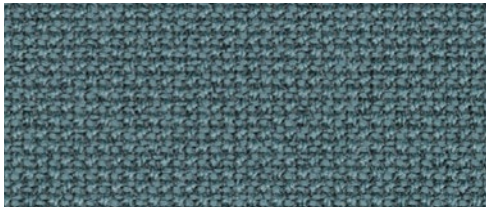
Tonal, TOL66186 (Gabriel)



Capture, CPT3302 (Gabriel)



Mandal, MAD760 (GU)



Cura Loop, CLP66167 (Gabriel)

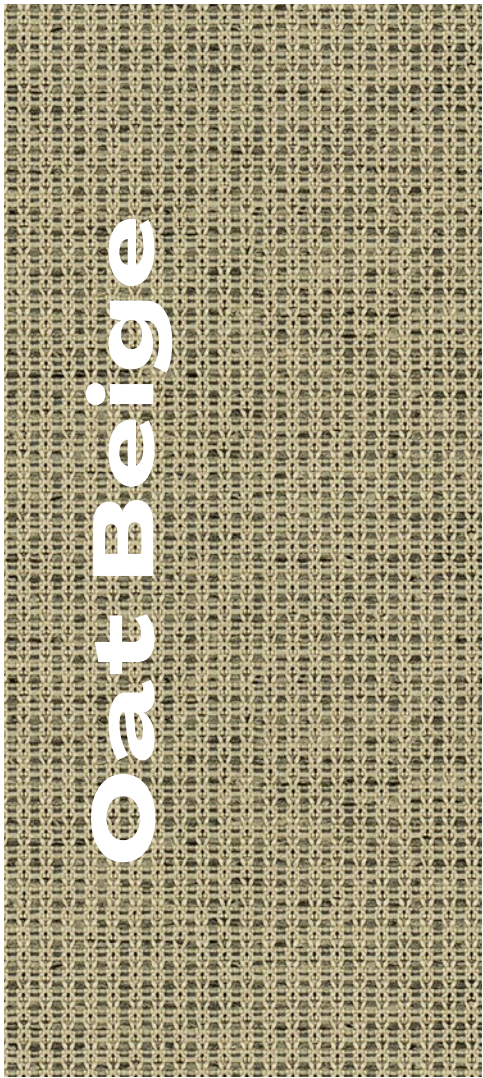




Match yourself

WITH OAT BEIGE

Oat Beige is simple, steady, and supportive.
It's not the star of the show, it's the one holding everything together in a calm and reliable way.



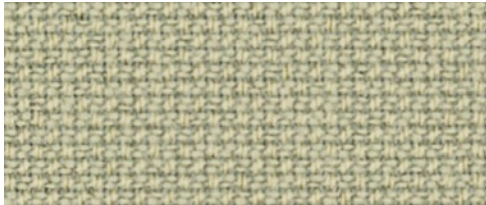
Tale, TAL61179 (Gabriel) Extended



Tonal, TOL61179 (Gabriel)



Mandal, MAD230 (GU)



Cura Loop, CLP62125 (Gabriel)



Remix 3, RMX113 (Kvadrat)





Match yourself

WITH MARBLE GREY

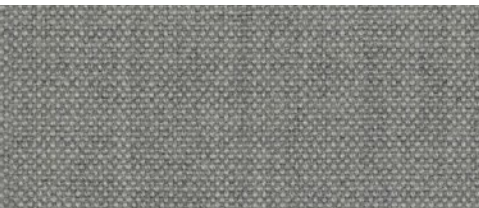
Marble Grey is soft, open, and full of light. It clears away the clutter and leaves room for calm and clarity, like someone who makes everything feel simple and honest.



Tale, TAL60122 (Gabriel) Extended



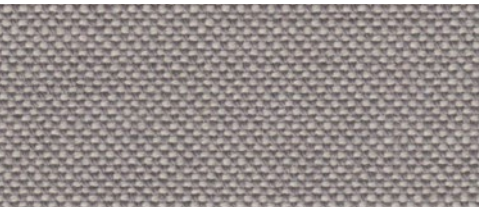
Tonal, TOL60122 (Gabriel)



Remix 3, RMX123 (Kvadrat)



Parcel Loop, PCL1701 (Gabriel)



Mandal, MAD120 (GU)





Match yourself

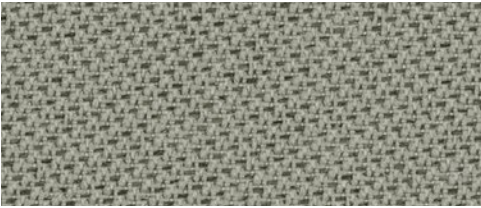
WITH ASH GREY

Balanced and calm, Ash Grey doesn't compete, it completes. It's supportive and adaptable, like a reliable friend who makes others shine.

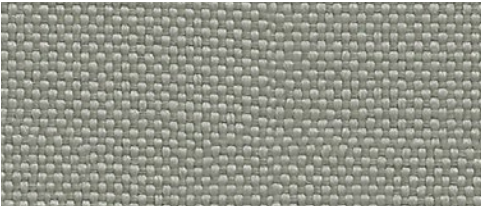


Ash Grey

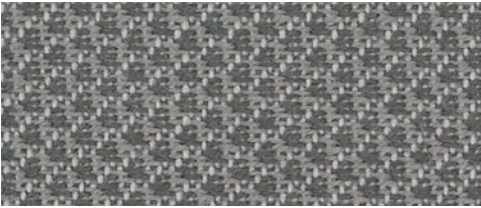
Tale, TAL60123 (Gabriel) ^{Standard}



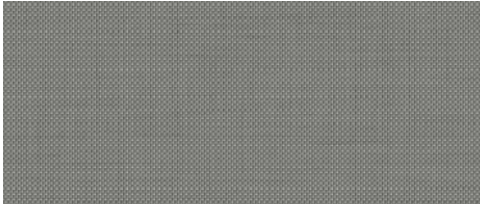
Tonal, TOL60123 (Gabriel)



Quest, QUE02 (Camira)



Node, NOD8660 (Ludvig Svensson)



Penta, PTA16 (Camira)

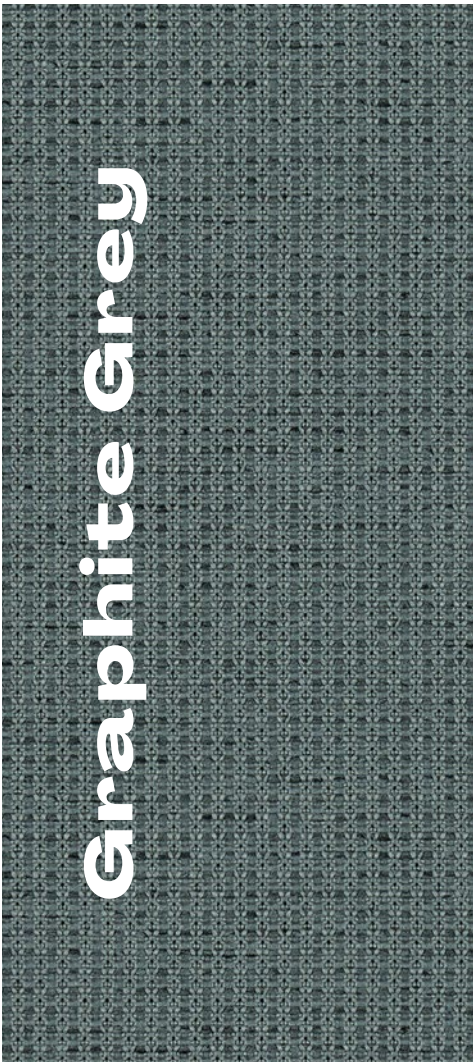




Match yourself

WITH GRAPHITE GREY

Graphite Grey is sleek, clear, and precise. It removes distractions and gets right to the point, like someone who's practical, minimal, and focused.



Tale, TAL60124 (Gabriel) Standard



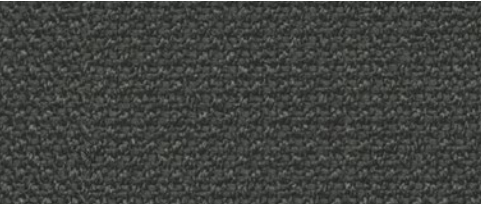
Tonal, TOL60124 (Gabriel)



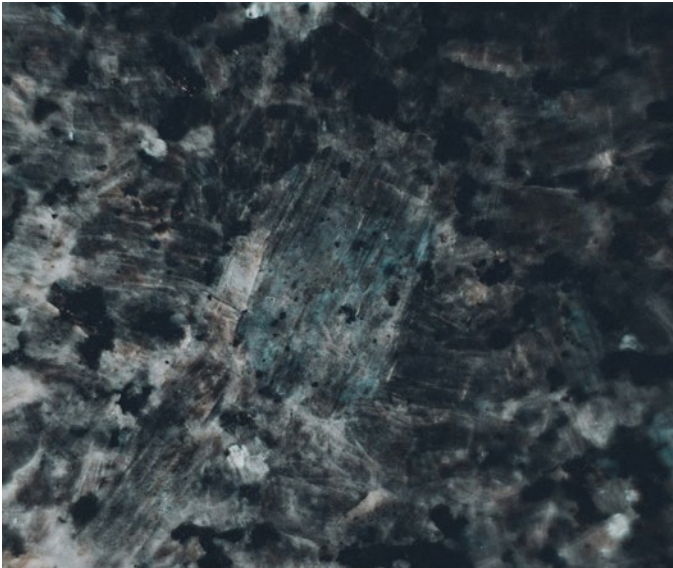
Steelcut Quartet, STQ0144 (Kvadrat)



Quest, QUE05 (Camira)



Cura Loop, CLP60019 (Gabriel)

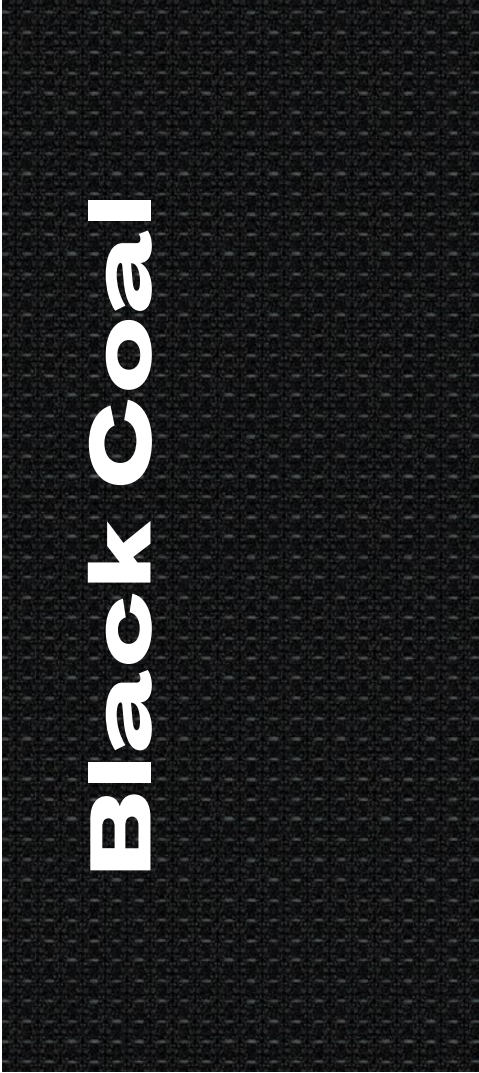




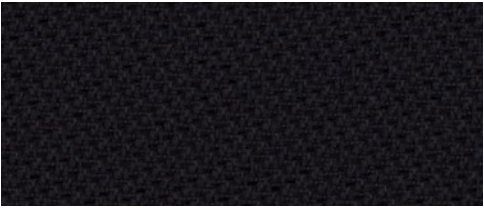
Match yourself

WITH BLACK COAL

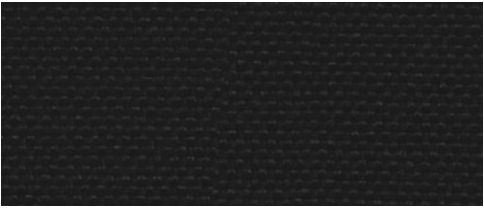
Strong and steady, Black Coal has a quiet authority. It feels solid and grounded, like someone who doesn't need to say much to be taken seriously.



Tale, TAL60999 (Gabriel) Standard



Tonal, TOL60999 (Gabriel)



Quest, QUE01 (Camira)



Focus, FC60999 (Gabriel)



Steelcut Trio 3, STT383 (Kvadrat)

